

# Protection & Performance Kit Profiles



**PRMS000010R1**

50.8mm Saddle Set

---



**PRMS000009R1**

45mm Saddle Set

---



**PRMS000011R1**

38mm Saddle Set

---



**PRMS000001R2**

45mm Saddle Back

---



**PRMS000003R1**

45mm Extended Slotted Saddle Front

---



**PRMS000004R1**

45mm Saddle Back with M8 tag

---



**PRMS000007R1**

45mm Extended Saddle Front

---



**PRMS000008R1**

45mm Double Saddle

---



**PRSB000001R1**

Standard 45mm Spotlight Bracket

## Protection & Performance Kit Profiles



### **PRSB000002R1**

Slotted 45mm Spotlight Bracket



### **PRSM000003R1**

Universal Small Bracket (for 45mm tube)



### **PRSB000006R1**

Universal Medium Slotted Bracket (for 45mm tube)



### **PRSB000009R1**

Universal Medium Bracket (for 45mm tube)



### **PRSB000007R1**

Universal Long Bracket (for 45mm tube)



### **PRSB000008R1**

Universal Long Slotted Bracket (for 45mm tube)



### **PRLB000002R1**

Beacon Mount (for 45mm tube)



### **PRLB000004R1**

Detachable Beacon Mount (for 45mm tube)



### **PRMP000013R1**

Universal 100x100x5mm M10 Plate



## **PRMP000011R1**

Universal 100x100x5mm M10 Slotted Plate



## **PRMP000061R1**

ARC 160x160x5mm M10 Mounting Plate



## **PRMP000027R1**

Universal 130x130x5mm M10 Mounting Plate



## **PUBS000002R1**

Universal 180x30x6mm 1/2 Inch Holed Bracket



## **PUBS000001R1**

Universal 94x30x6mm M8 Holed Bracket



## **MRAC000010R1**

30mm Aluminium Clamp Set for 45mm Tube



## **MRAC000011R1**

50mm Aluminium Clamp Set for 45mm Tube



## **MRAC000012R1**

30mm Rounded Aluminium Clamp Set for 45mm Tube



## **MRAC000013R1**

30mm Aluminium Clamp Set for 50mm Tube



## **MRAC000014R1**

50mm Aluminium Clamp Set for 50mm Tube



## **P000011R1**

Roll Cage profile for Single Loadlok Fitting



## **PPPT000003R1**

2.5 Inch Rubber Lined P Clip



## **PPPT000004R1**

2 Inch Rubber Lined P Clip



## **PPPT000005R1**

45mm Rubber Lined P Clip



## **MRBZ000002R1 & MRBP000001R1**

Pin and Boss Mount for 45mm Tube



## **PRMP000005R1**

Pin and Boss Mounting Plate



## **PRLB000003R1**

Universal Beacon Mounting Bracket for 45mm Tube



## **MRCJ450002R1**

45mm Roll Cage Mounting (Pair of)



## MRCJ500002R1

50mm Roll Cage Mounting (Pair of)



## PAPM000001R1

Stainless Steel Panel Mount for an 175 amp Anderson Plug



## PRMP000076R2

Land Rover Soft Top Interior light & alarm mount plate



## PTOR000016R1

Universal Panel Tag with 5mm hole



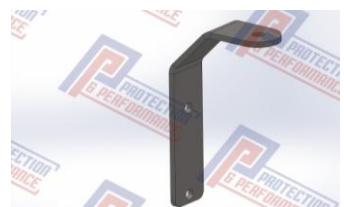
## P RTP000002R1

Laser cut Socket Tube for 45mm tube



## P RTP000003R1

Laser cut Socket Tube for 50.8mm tube



## PRSB000010R1

Stainless Steel LR 90/110 Wing Mirror Spotlight Bracket



## PRSB000011R1

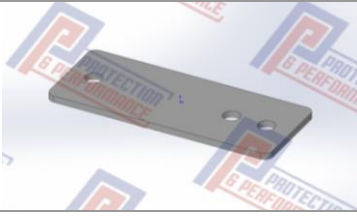
Stainless Steel LR 90/110 Wing Mirror Spotlight Bracket to fit with a Protection & Performance Ltd Roll Cage

## Protection & Performance Kit Profiles



### **P000011R1**

Roll Cage profile for Single Loadlok Fitting



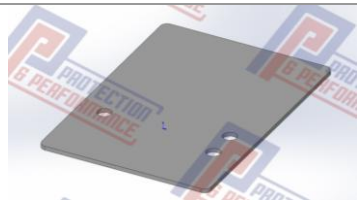
### **PUFM000001R1**

Universal Mounting Plate with 3x M10 Holes in a line



### **PUFM000002R1**

Universal Front Mounting Plate



### **PUFM000003R1**

Universal Front Mounting Plate - Requires Folding